



Easily Manage Workforce Shift Scheduling,  
Track Hours, and Calculate Wages

## NetSuite SuitePeople Workforce Management



NetSuite SuitePeople Workforce Management provides a single solution to streamline shift scheduling, easily capture time and attendance, and automate wage calculations. With a visual scheduling tool, managers can see exactly where shifts need to be added or adjusted. Digital time tracking makes it easy for employees to clock in and out on a computer or mobile device. Automate wage calculations and track overtime hours with a built-in wage rules engine that seamlessly integrates with NetSuite SuitePeople Payroll. With Workforce Management part of NetSuite ERP, your company gains visibility into how workforce trends impact financial performance.

### Key Benefits

- **Improve operational efficiency** by streamlining routine tasks.
- **Easily schedule shifts** with a visual scheduling tool.
- **Quickly and easily track time and attendance** with digital time-clocking on mobile, tablet, or desktop devices.
- **Accurately pay workers** using a wage rules engine that automates the calculation of regular hours, overtime, and holiday pay.
- **Enhance the employee experience** with a mobile app that allows employees to plan, view, and easily change their schedules.

For more information contact Protelo at [www.proteloinc.com](http://www.proteloinc.com) | 916-943-4428

## Optimize Scheduling

Create, edit, and reassign shifts in one place. The visual shift scheduling tool allows managers to use a combination of forecasts, employee schedule templates, and labor deployment models to optimize the workforce.

## Digital Time-Tracking

SuitePeople Time Clock allows employees to punch in and out on an Android or iOS mobile app with geo-tagging, or you can specify on-site Android or iOS tablets with a PIN. Optional photo capture and biometric fingerprint verification eliminates the risk of buddy clocking.

## Forecast Labor Needs

A customizable dashboard allows you to select, organize, and monitor your most important data at any point

throughout the day—without having to search in multiple places. See daily and weekly stats including forecast sales, labor cost percentages, sales per labor hour, customer counts, and store or warehouse targets.

## Enable Compliance

Lower compliance risks with a solution that manages and automates the calculation of hours and overtime based on Federal and State labor regulations and files payroll taxes all within one unified system.

## Track Overtime Hours

Automatically calculate hours, overtime, and holidays with the built-in wage rules engine. Apply unique company policies and rules and see them triggered as you build schedules and approve time worked.

The screenshot displays the Oracle Netsuite Workforce Management interface. At the top, there's a navigation bar with 'ORACLE NETSUITE' and various menu items like 'Billing', 'Customers', 'Vendors', 'Payroll and HR', 'Financial', 'Reports', 'Analytics', 'Setup', 'Workforce Management', 'SuiteApps', and 'Support'. Below this is a 'Workforce Management' header with a 'Personalize' dropdown and a 'Layout' icon. The main content area shows a 'Shifts' tab with a calendar view for the week of 2022-09-26. A summary table at the top lists metrics for each day: Monday, Sep 26th; Tuesday, Sep 27th; Wednesday, Sep 28th; Thursday, Sep 29th; Friday, Sep 30th; Saturday, Oct 1st; and Sunday, Oct 2nd. The metrics include Hours, Total wages, Sales, Units, Average wage, Labor percent (21-25.2%), Productivity, and Labor efficiency. Below the summary table is a grid of employee shifts. Each row represents an employee, and each column represents a day. Shifts are color-coded and include details like start/end times, employee name, and total hours for that day. For example, Angela Hartt has a shift from 8am-2:15pm on Monday, totaling 6.25 hours. The grid shows shifts for 10 employees: Angela Hartt, Ann Torres, Anthony Collins, Brittney Oliver, Bruce Foster, Chloe Bradshaw, Danielle Gaines, and Dustin Vega. The interface also includes a 'Dashboard' tab and various action buttons like 'Schedule', 'Copy', 'Options', 'Print', and 'Edit forecast'.

Optimize your team's schedule while tracking overtime hours.

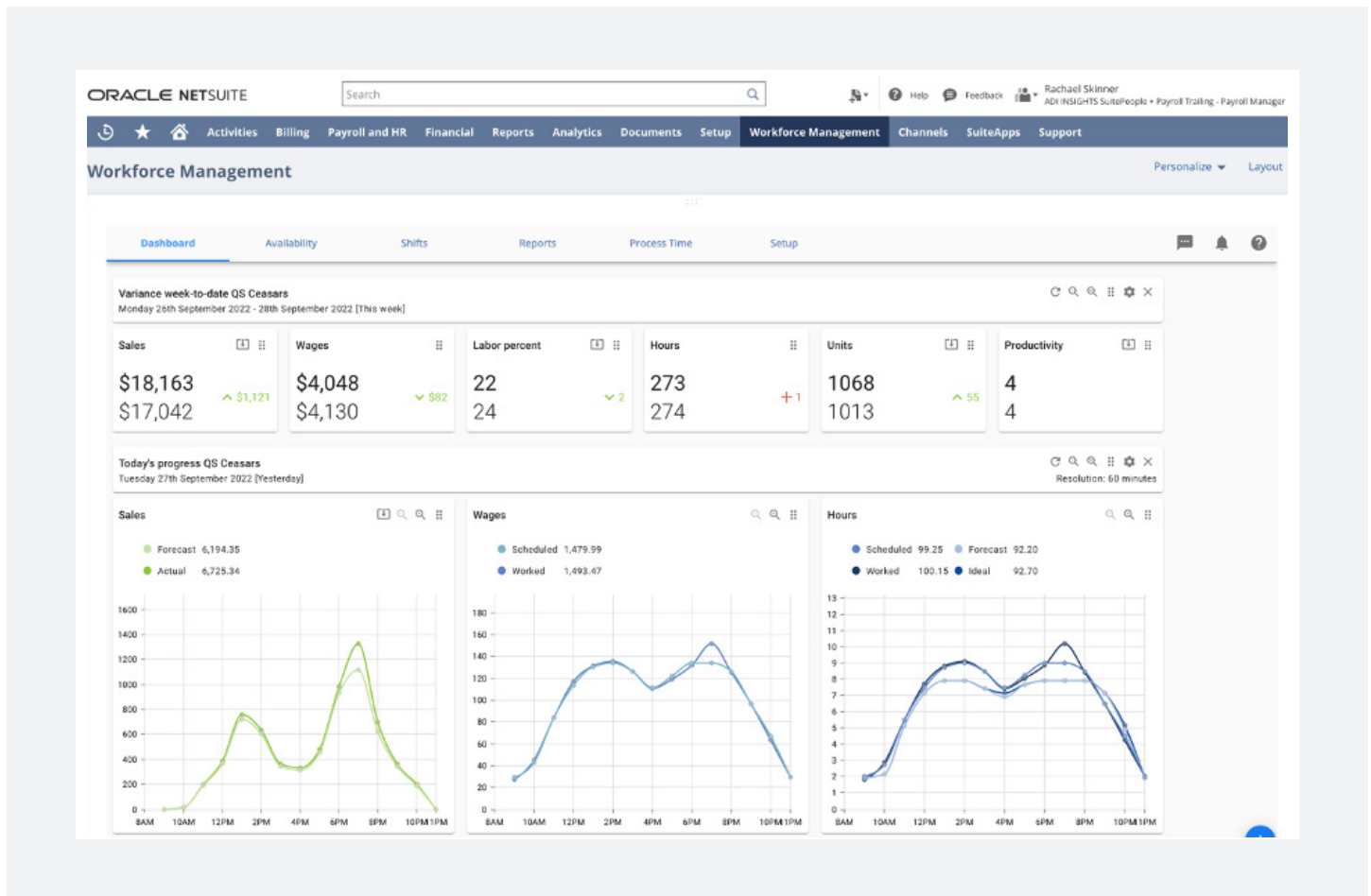
For more information contact Protelo at [www.proteloinc.com](http://www.proteloinc.com) | 916-943-4428

## Mobile Workforce Management

The mobile app allows managers and employees to access and interact with their schedules from anywhere, anytime. Employees can clock in and out with the mobile app to easily track their time, confirm they'll work the published shift schedule, and get reminders of upcoming shifts and breaks.

## Simplify and Reduce Costs

Unify ERP, workforce management, and payroll systems to limit manual processes in Excel, eliminate disjointed solutions, and cut the cost of outside services. Ensure payroll data seamlessly transfers to your ERP system to be posted on the general ledger in real time. Ensure financial data stays accurate and consistently up to date.



Customizable dashboard allows you to select and monitor important workforce data.

For more information contact Protelo at [www.proteloinc.com](http://www.proteloinc.com) | 916-943-4428

